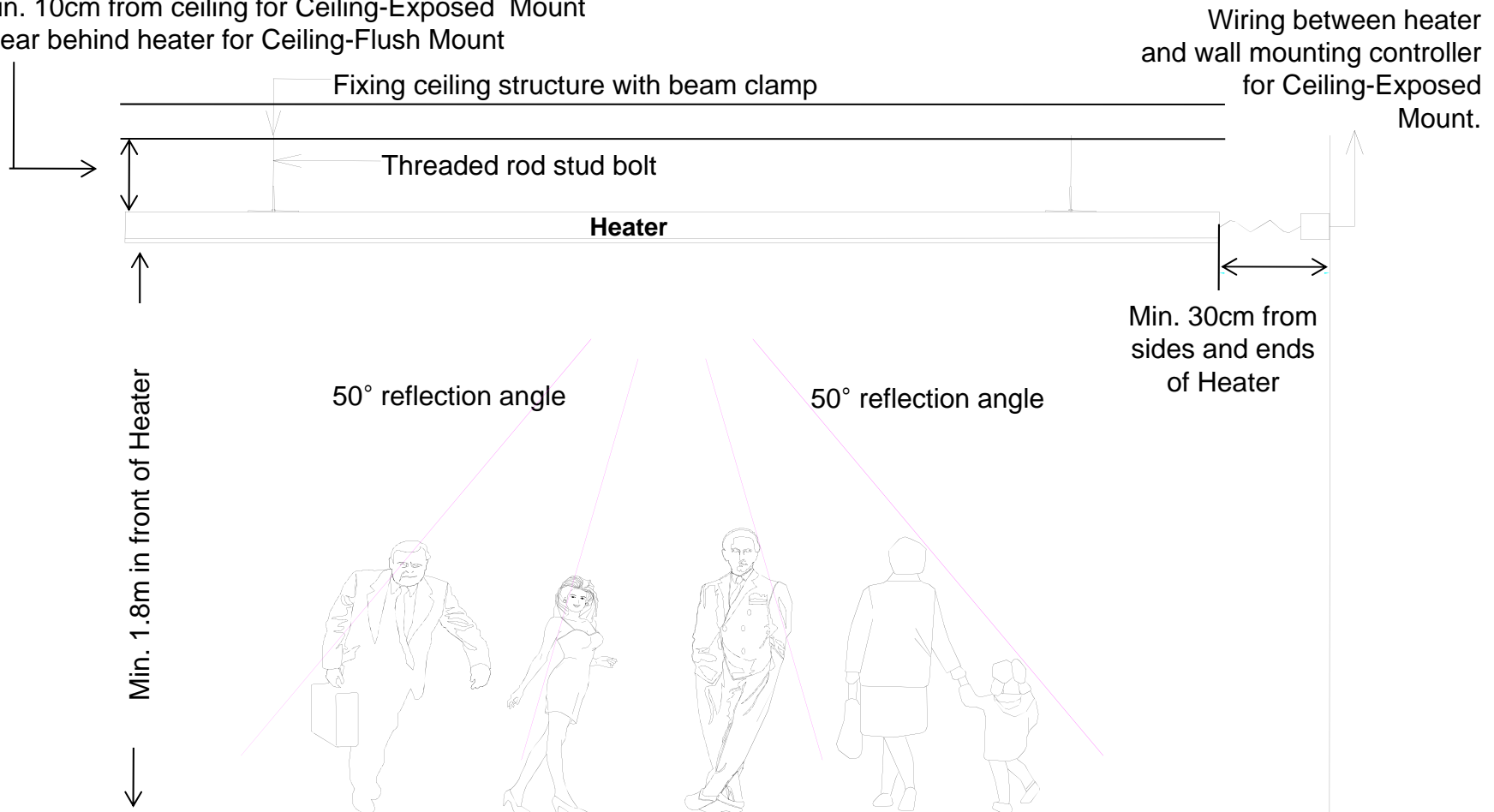


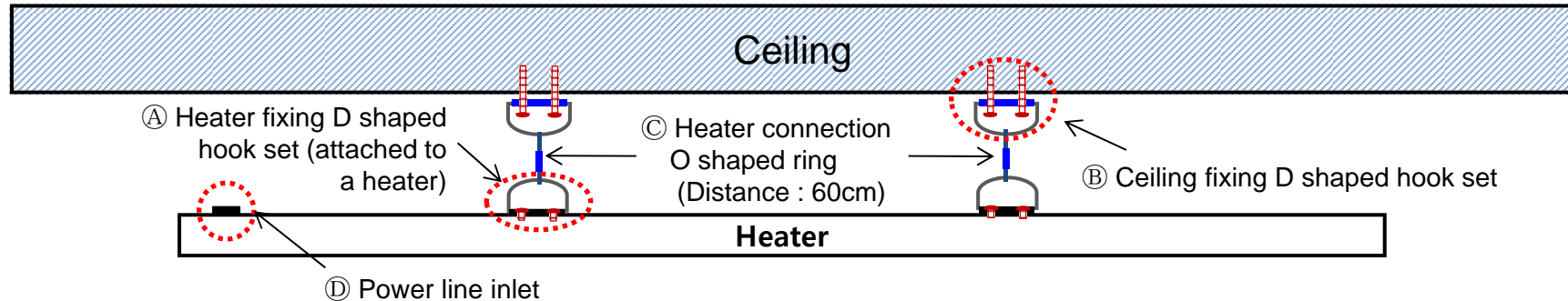
Installation for Ceiling-Exposed / Flush Mount Heaters

- Min. 10cm from ceiling for Ceiling-Exposed Mount
- Clear behind heater for Ceiling-Flush Mount

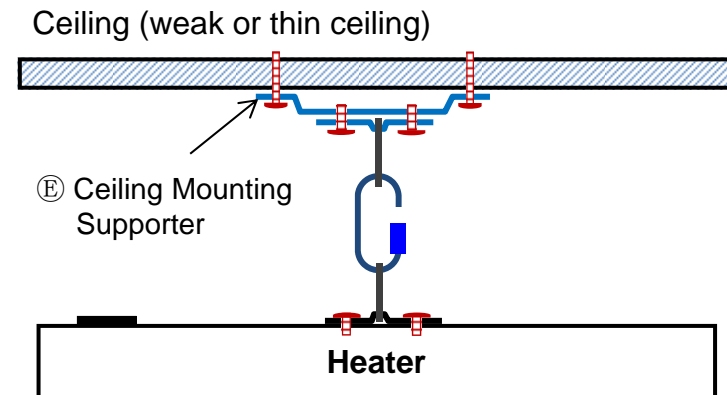
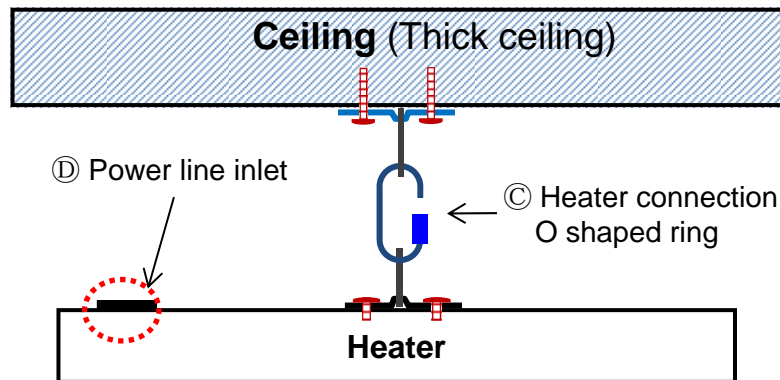


Installation Procedures for Ceiling-Exposed Mount Heaters

Horizontal Section

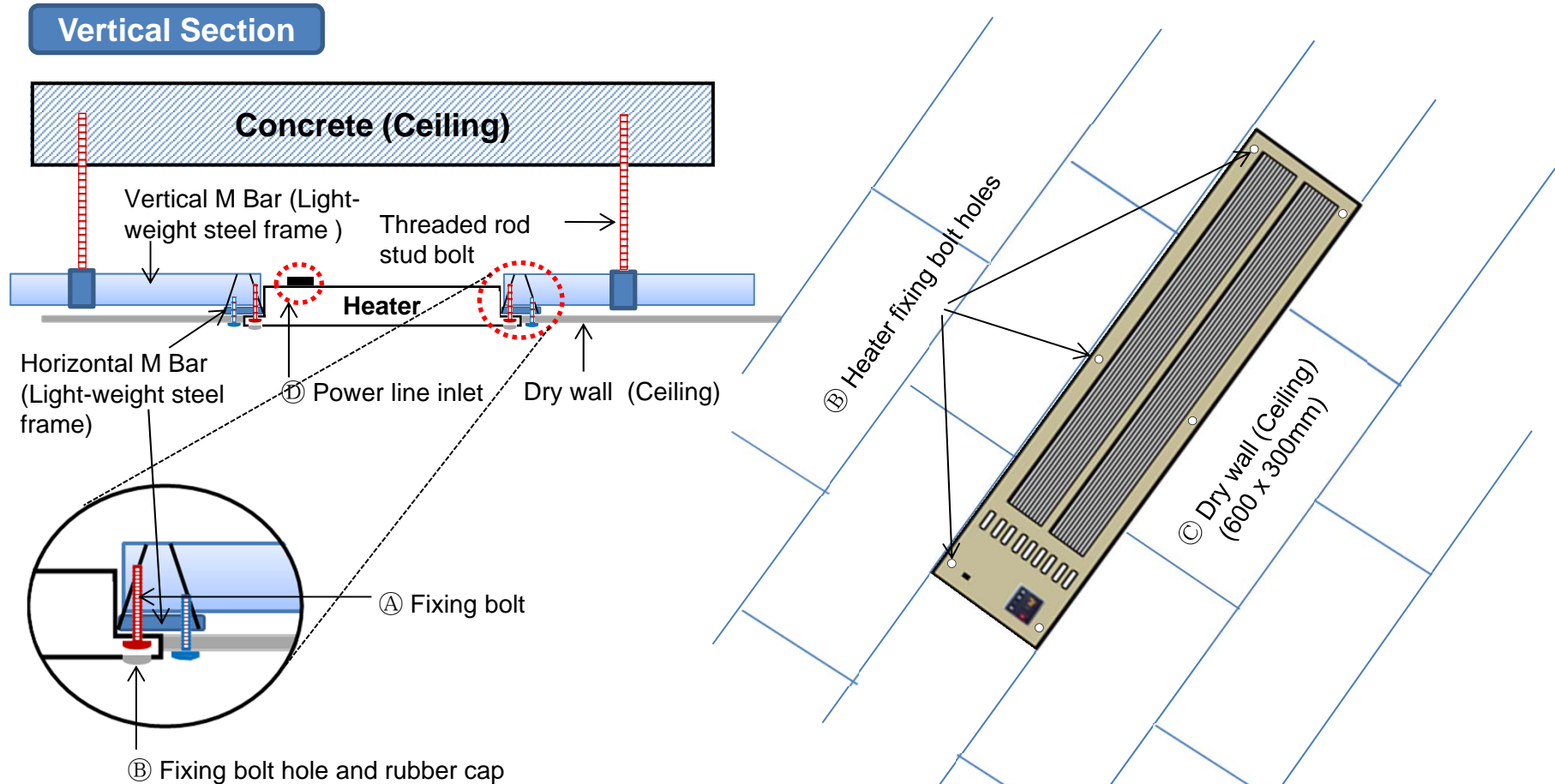


Vertical Section



- 1) First, determine an installation position on the ceiling and then install **B Ceiling fixing D shaped hook sets** in the designated position at a distance of 60cm.
- 2) Hangs **C Heater connection O shaped ring** to **B Ceiling fixing D shaped hook set** installed.
- 3) Hangs **A Heater fixing D shaped hook set** at the back of a heater to **C Heater connection O shaped ring** and then fastens the bolts tightly.
- 4) In case ceiling is weak or thin, make sure to install **B Ceiling fixing D shaped hook set** using **E Ceiling Mounting Supporter**.
- 5) Finally, open a cover of the control unit and connect electric wires.

Installation Procedures for Ceiling-Flush Mount Heaters



- 1) First, determine an installation position and pull out © **Dry wall (Ceiling)** of the designated position.
- 2) Push the heater into the space removed the dry wall and remove rubber caps and fix ① **Fixing bolt** into the ② **Heater fixing bolt holes**.
- 3) Close ② **Heater fixing bolt holes** with rubber caps.
- 4) Finally, open a cover of the control unit and connect electric wires.